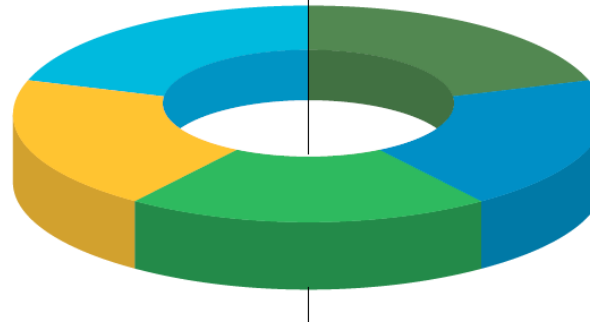
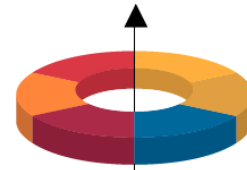


VISION

We are here to
change our world





PROSPERITY

- 4. QUALITY EDUCATION
- 8. DECENT WORK AND ECONOMIC GROWTH
- 9. INDUSTRY, INNOVATION AND INFRASTRUCTURE
- 11. SUSTAINABLE CITIES AND COMMUNITIES
- 12. RESPONSIBLE CONSUMPTION AND PRODUCTION
- 16. PEACE AND JUSTICE AND STRONG INSTITUTIONS



PEOPLE

- 1. NO POVERTY
- 2. ZERO HUNGER
- 3. GOOD HEALTH AND WELL-BEING
- 5. GENDER EQUALITY
- 10. REDUCED INEQUALITIES



PLANET

- 6. CLEAN WATER AND SANITATION
- 7. AFFORDABLE AND CLEAN ENERGY
- 13. CLIMATE ACTION
- 14. LIFE BELOW WATER
- 15. LIFE ON LAND



Water Sensitive Gold Coast

Global Alignment

Stockholm Resilience Centre SDGs



Water central to city shaping to support our water lifestyle, liveability, sustainability and resilience

Vegetation to support urban cooling, ecology, water and air quality, mental and physical health

Green and Blue Inspired Design to support connectedness, walkability and cycling

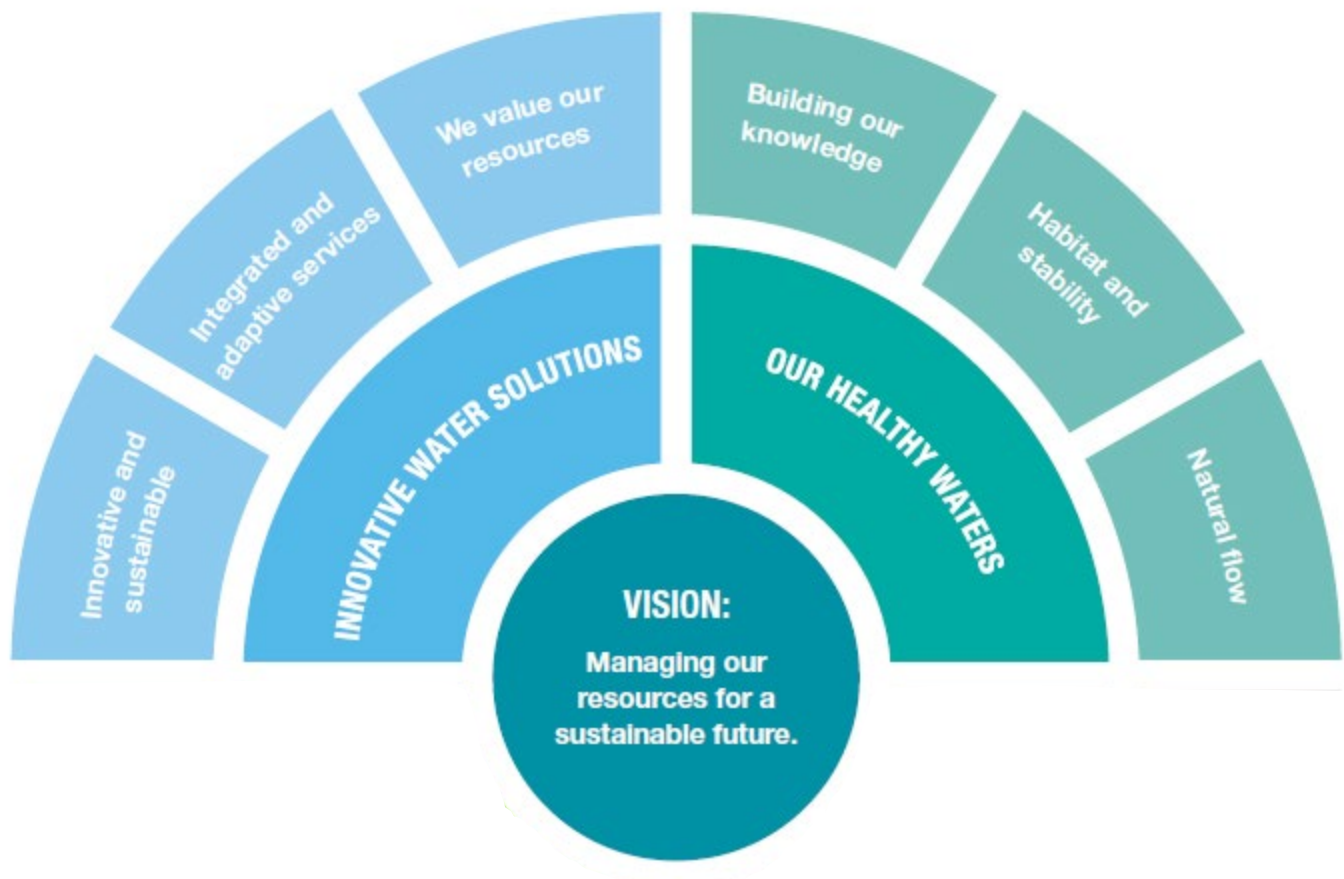
Multifunctional infrastructure

Landuse, water & waste, stormwater, flood management, climate change adaptation, transport, parks

Resources efficiency and circular economy

renewable energy, bioresources, recycled water, agriculture









Water as a Life Necessity

1058
Comments



Over 40,000
words

Drinking
Water

Sewage
Services

Resilience &
Adaptation

Resource
Recovery

Main Concerns

- Bulk water supply resilience
- Droughts and floods
- Cost of strategy implementation and natural assets maintenance
- Impact of climate change and natural hazards
- Underutilised assets (e.g. desalination plant)
- Water for agriculture
- Complexity of governance

Operational Response

- Water efficiency incl. incentives
- Smart metering
- Waste to energy initiatives
- Renewable source of energy
- Community education on water efficiency, reuse and disposal

Planning Response

- More dams and desalination plants
- Provision of water tanks and water efficiency measures in planning scheme
- Recycled water use
- Long term adaptive and resilience planning for changing climate

Water as a Lifestyle Choice

1058
Comments



Over 40,000
words

Lifestyle

Access

Recreation

Inspiring
Design

Main Concerns

- **General Access**
 - Walkways/bikeways
 - Carparks
 - Water taxis, ferries
- **Facilities & amenities**
 - toilets, showers, free water filling station, seating and shades
- **More recreational opportunities**
 - Surfing pool
 - Play based water parks
 - Blocked off ocean pool area
 - Artificial wave park
 - Snorkelling & dive sites
 - More public boat ramps
- **More Water Inspired Design**
 - More restaurants nearby waterways
 - Water Fountains
 - Green walls and roofs
 - More street trees for cooling the city

Operational Response

- Safety (e.g. Sharks, midges, weeds, other)
- Dredging
- Community education and involvement

Planning Response

- Public vs Private ownership/access

Water for a Sustainable Future

1058
Comments



Over 40,000
words

Environmental
Protection

Waterway
Health

Lakes &
Canals

Groundwater

Main Concerns

- Natural habitats and ecosystem protection
- Unsustainable growth and urban development
- Sediment run-off and bank erosion
- Algae blooms and fish kill
- Sustaining water resources
- Waterways quality and health
- Pollution and littering
- Spit development

Operational Response

- Active management of natural env.
- River bank restoration
- Lakes & canals maintenance
- Active education & community participation
- Stormwater quality management
- Stormwater harvesting
- Water mining prevention
- Enforcement of littering laws
- Speed control & enforcement

Planning Response

- Planning scheme policy for:
 - setbacks
 - water sensitive urban design
- Overlay Codes for:
 - prevention of development on floodplains

INSPIRE



How to make lasting change

Systems thinking approach to delivering exemplary WSC precincts



**Sustainable
Prosperous
Liveable**

GOLD COAST



Population growth & Land use



Water sensitive Gold Coast



**Catchments, surface water &
groundwater**



Water, wastewater & solid waste



**Industries, agriculture,
economic development**



Constructed water environments



Parks & transport network



**Flood overlay & risk
Sea level rise, Coastal hazard**

Damien Leading Memorial Park

Riparian Restoration Project

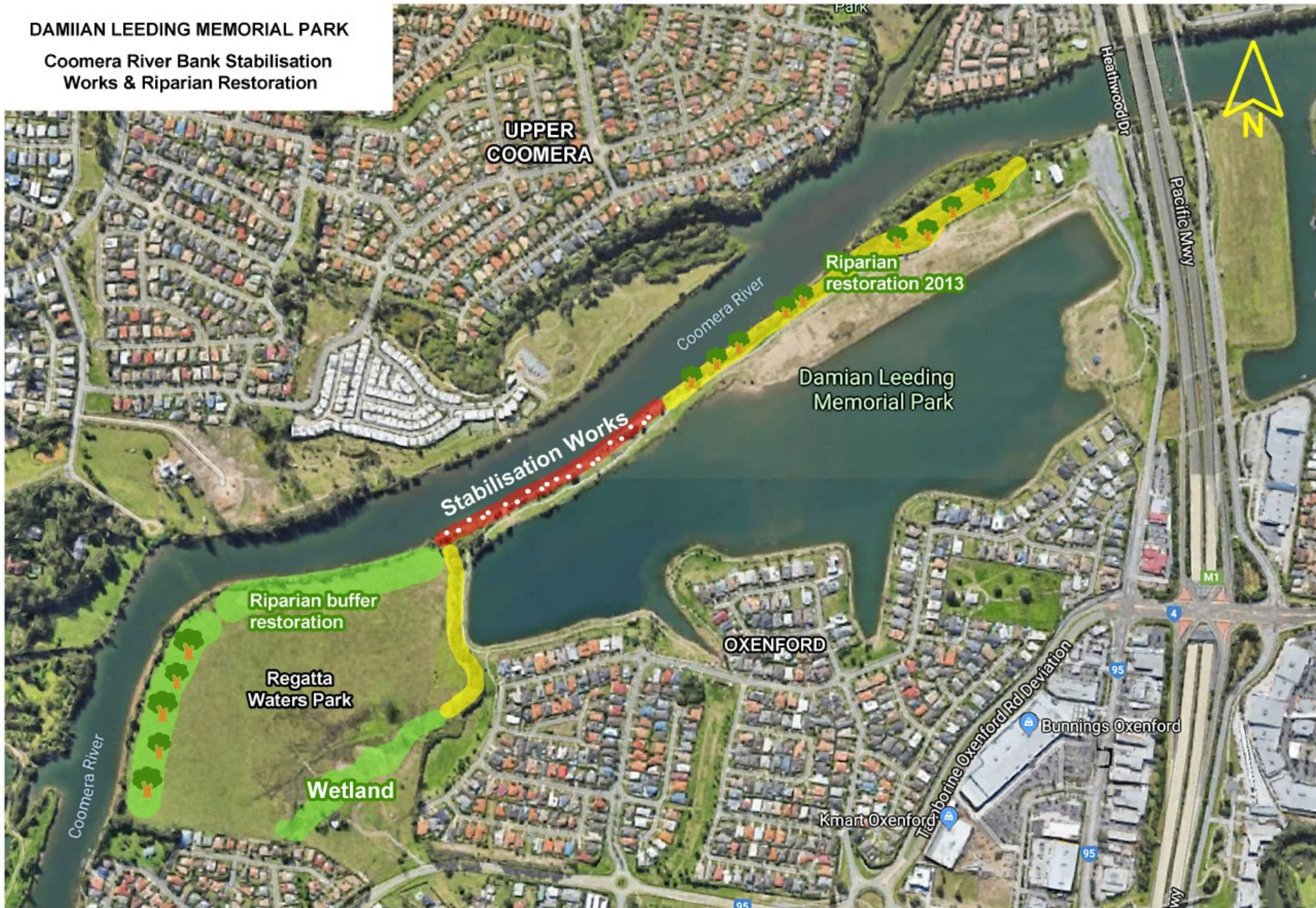
A changing environment

- River Bank Erosion
- Land use changes
- Dredging
- Stream modifications
- Boat activity

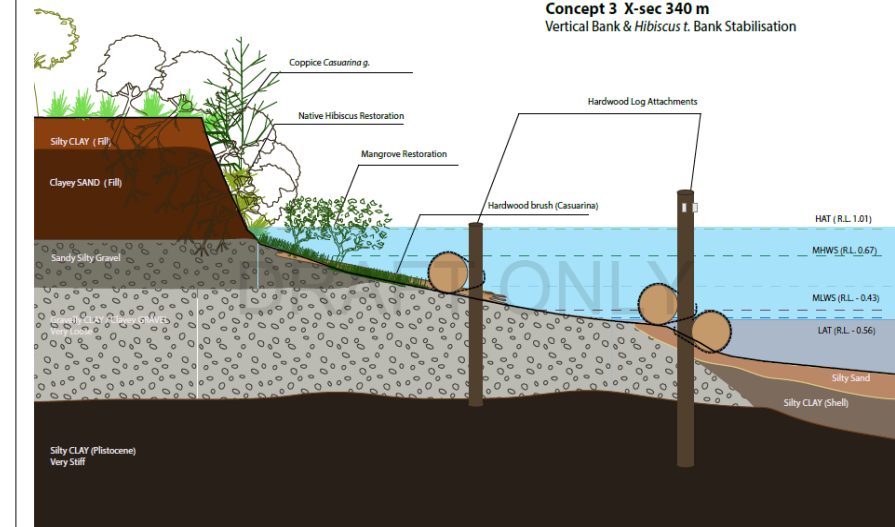
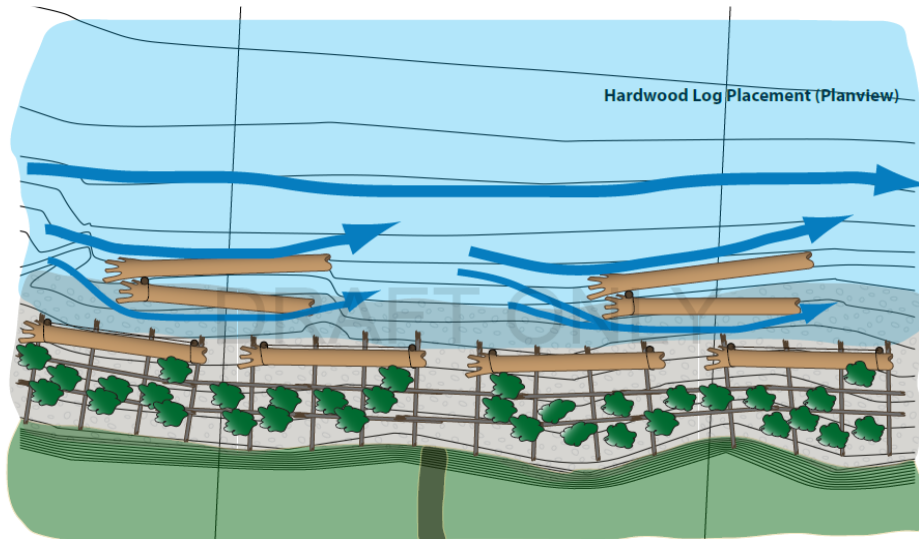


DAMIIAN LEEDING MEMORIAL PARK

Coomera River Bank Stabilisation Works & Riparian Restoration



Stabilisation & Revegetation





Recycled Water Expansion

Greening the City Project

Project Drivers



Recycled Water Network Expansion



Enabling and supporting environmental obligations and responsibilities



Greening the City to enhance Liveability



Supporting and growing the local economy

City Wide Benefits

Environmental



Reduced nutrient loads to the Seaway



1,500 Ha of green space irrigated



Maintaining and Enhancing Ecosystems

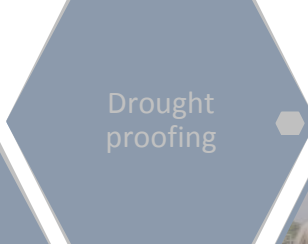


Community

Addressing the Urban Heat Island effect



Reduction in potable water demand



Drought proofing



Economic

Facilitating the development of new industry



Promoting Economic Development

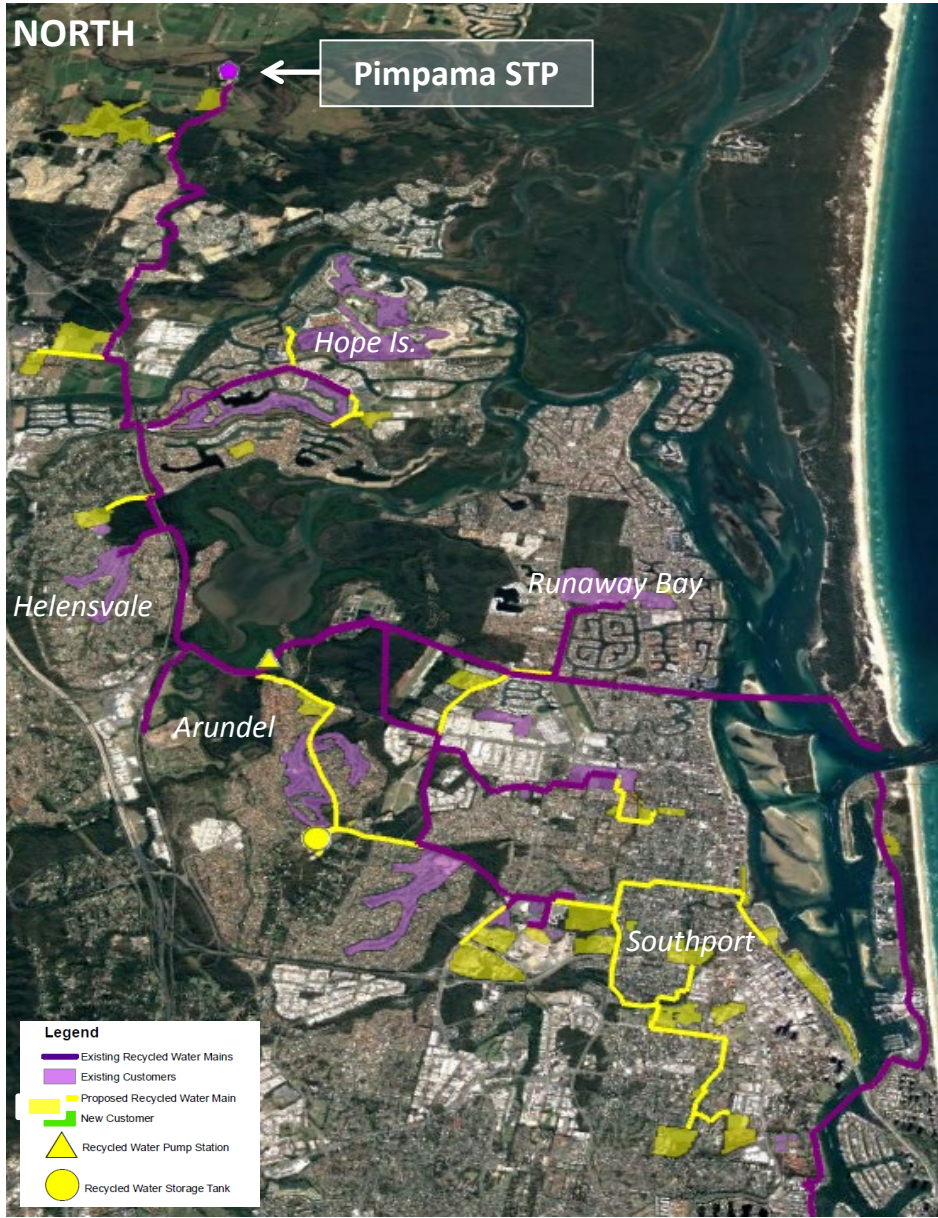


Enabler for transitioning to a water sensitive city



NORTH

Pimpama STP



- Legend**
- Existing Recycled Water Mains
 - Existing Customers
 - Proposed Recycled Water Main
 - New Customer
 - ▲ Recycled Water Pump Station
 - Recycled Water Storage Tank

SOUTH

Merrimac STP

